

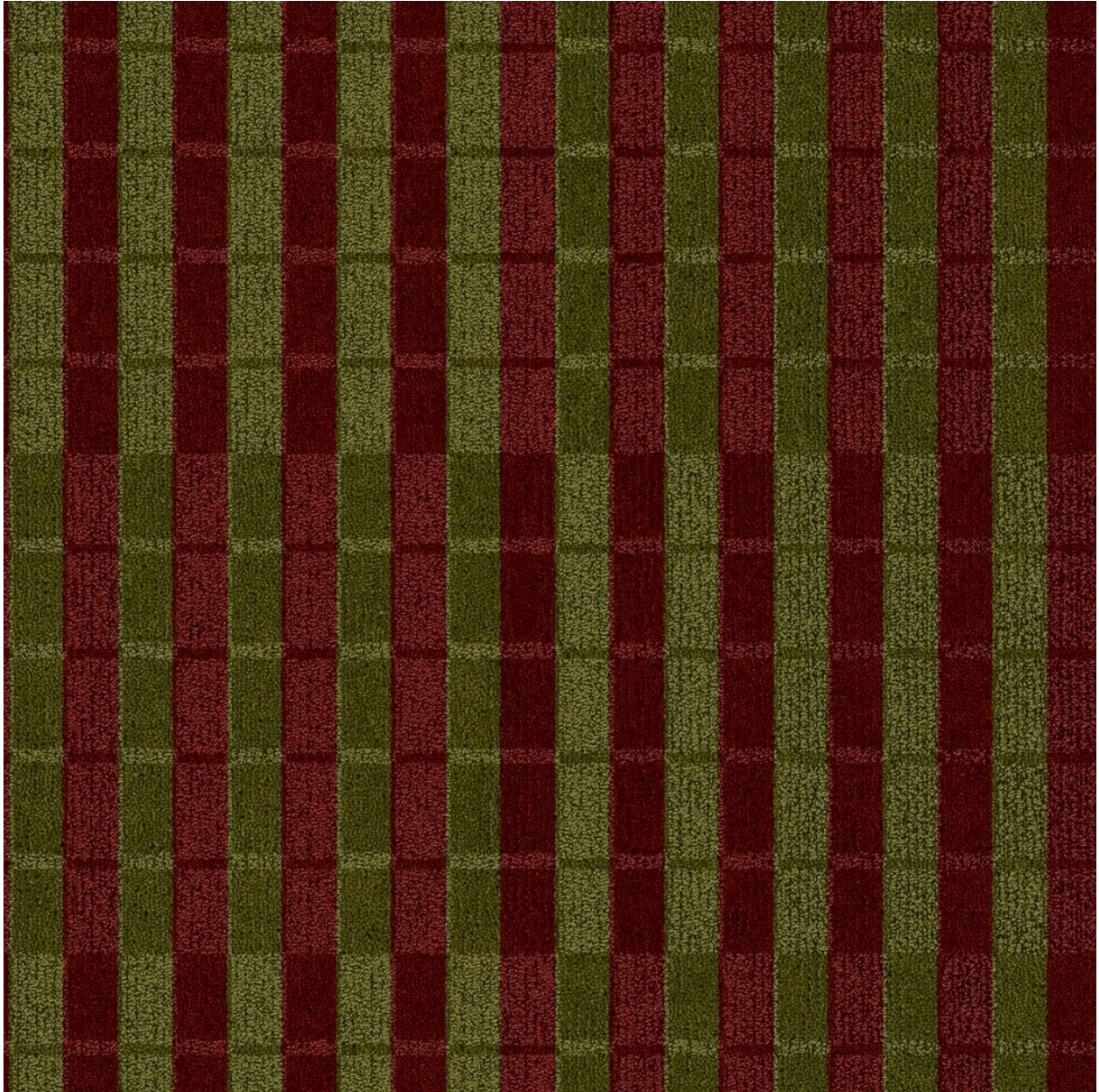


Style: 364 BAR NONE  
Repeat: 24"x24"  
Color: 246


YARN COMPONENTS

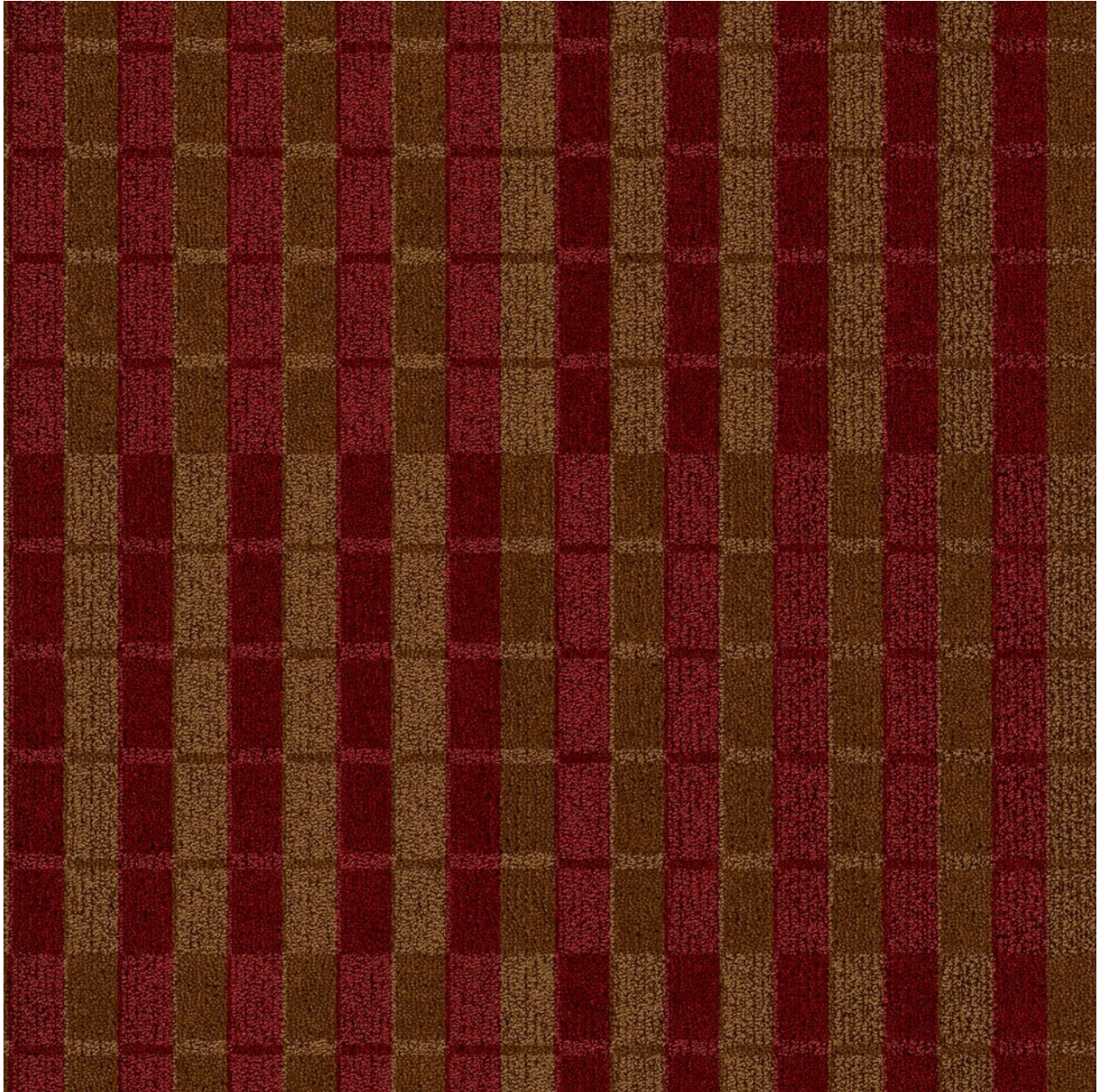
A  2048  
B  3001



Style: 364 BAR NONE  
Repeat: 24"x24"  
Color: 248

YARN COMPONENTS

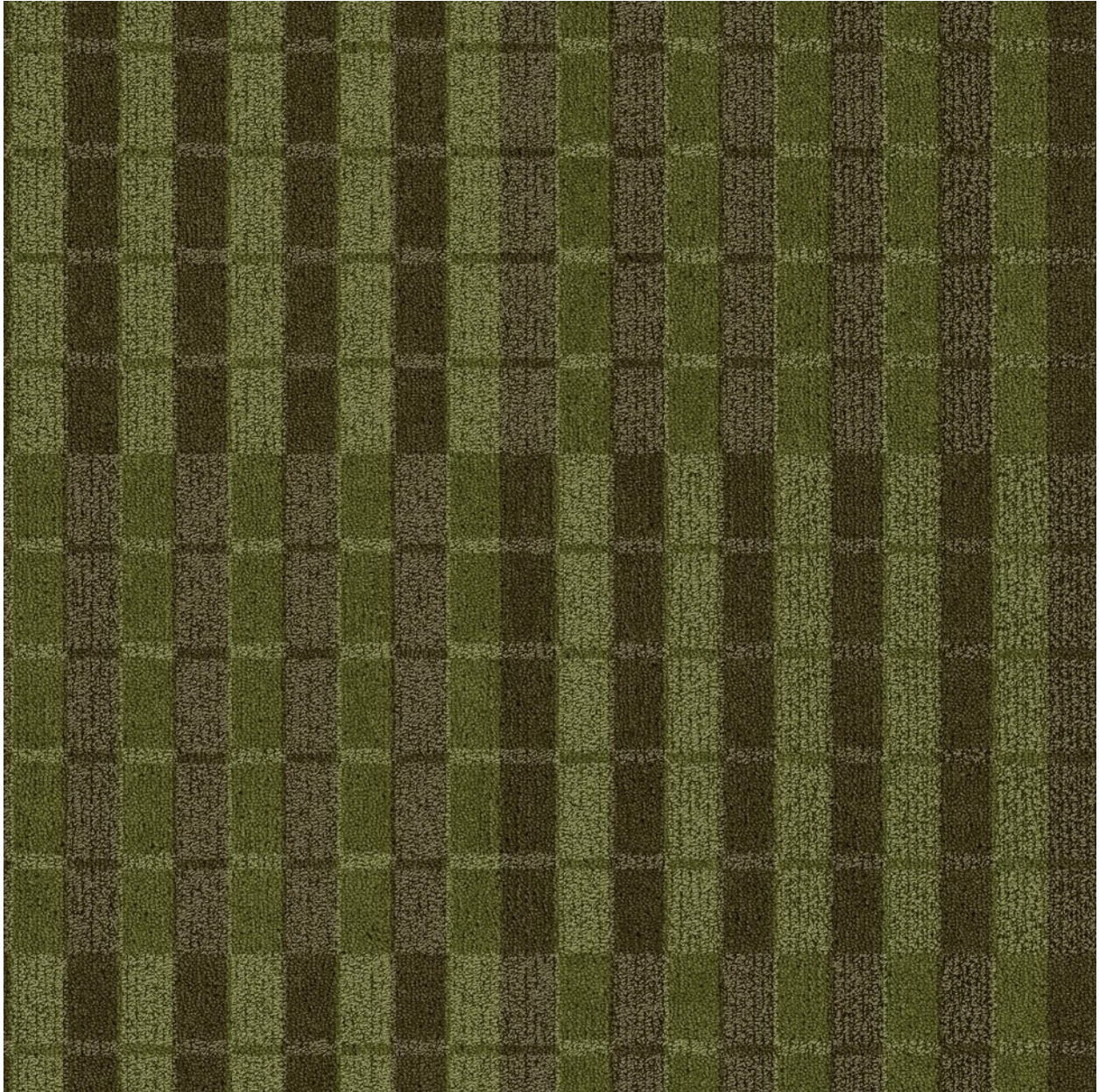
- A  2041
- B  4095



Style: 364 BAR NONE  
Repeat: 24"x24"  
Color: 249



YARN COMPONENTS

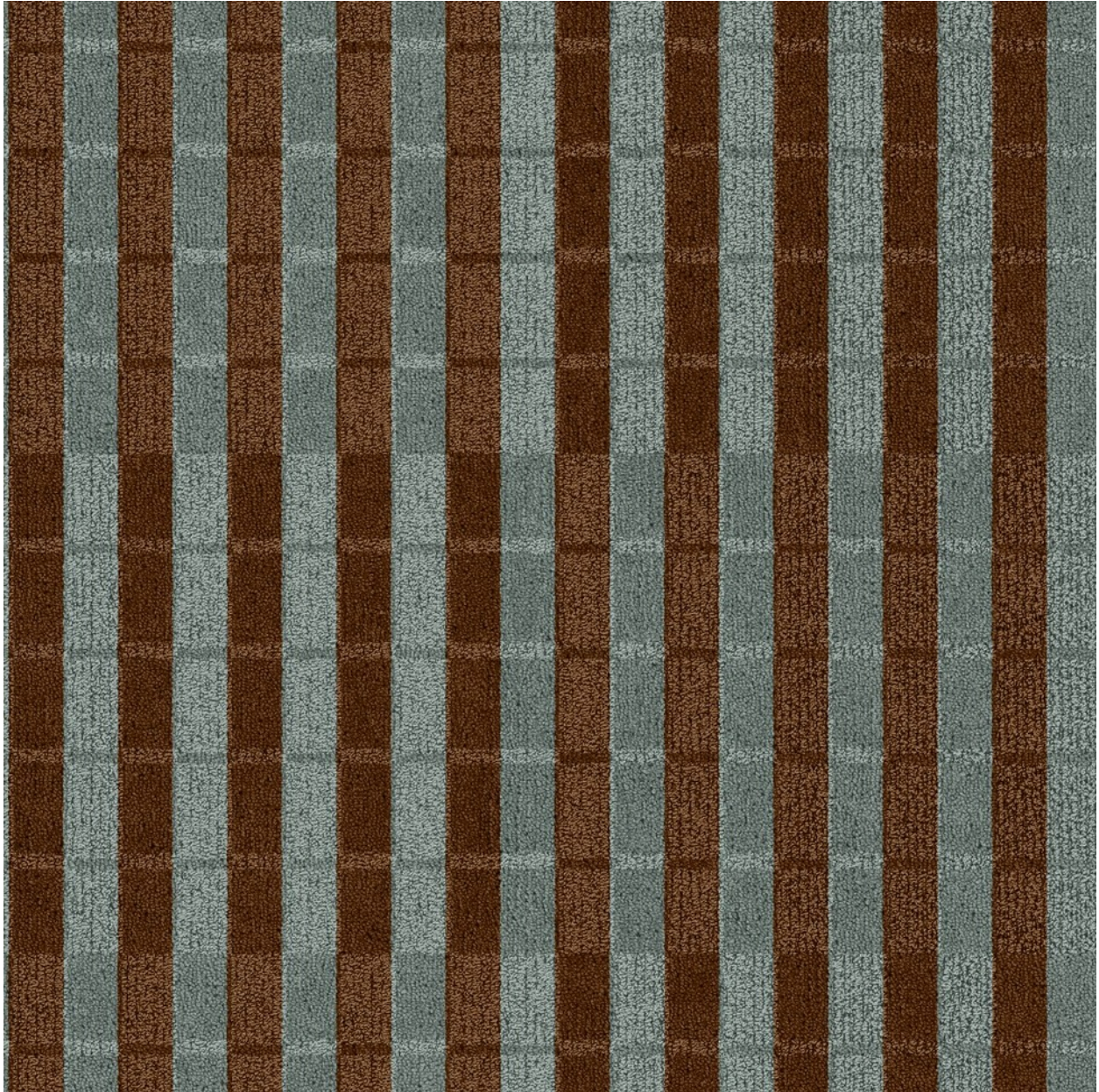
- A  3504
- B  X211



Style: 364 BAR NONE  
Repeat: 24"x24"  
Color: 258



YARN COMPONENTS

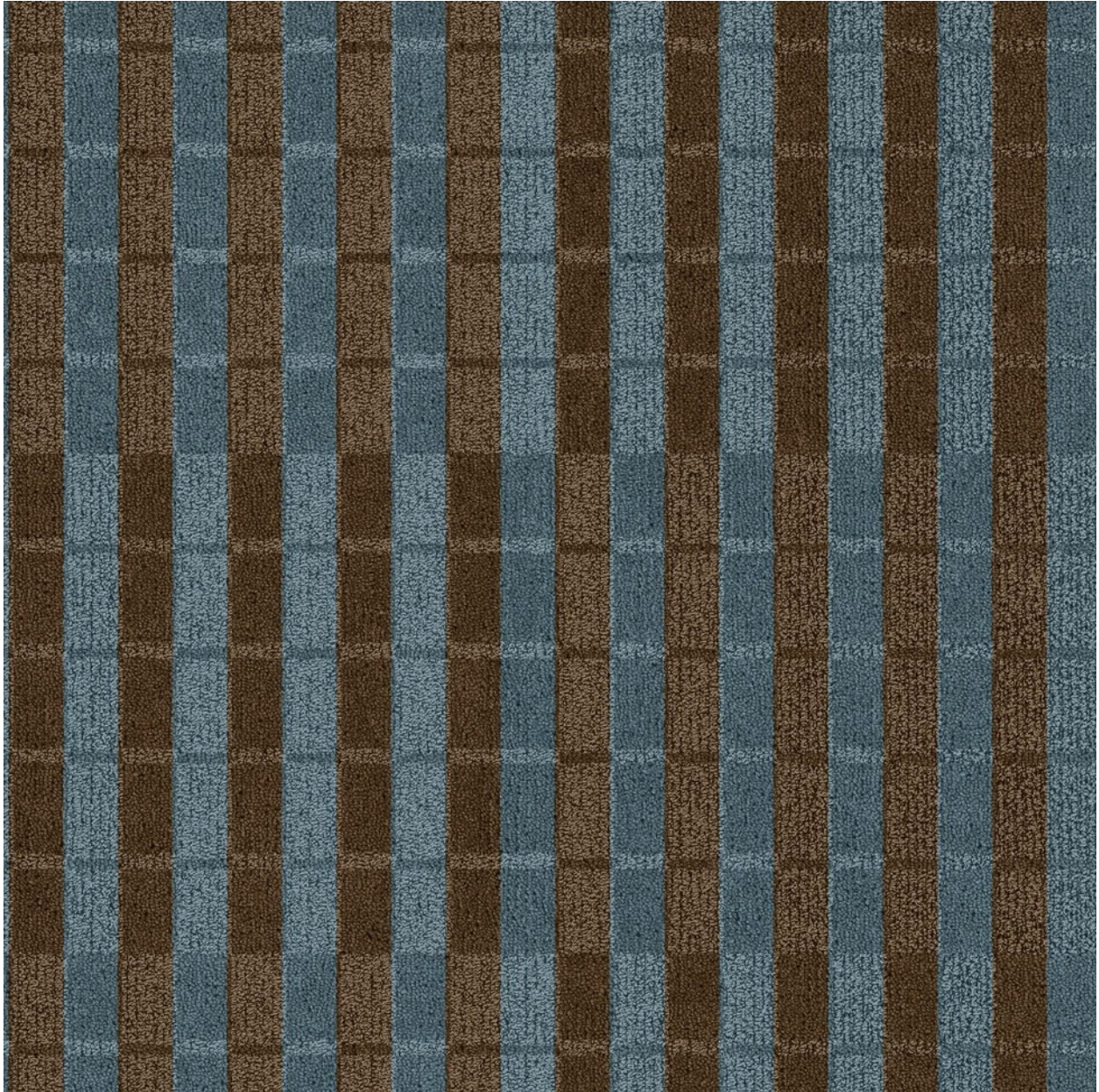
- A  7506
- B  4502



Style: 364 BAR NONE  
Repeat: 24"x24"  
Color: 262



YARN COMPONENTS

- A  4501
- B  7009



Style: 364 BAR NONE  
Repeat: 24"x24"  
Color: 264



YARN COMPONENTS

A  5503  
B  7502



Style: 364 BAR NONE  
Repeat: 24"x24"  
Color: 268

YARN COMPONENTS

A  5057  
B  4095

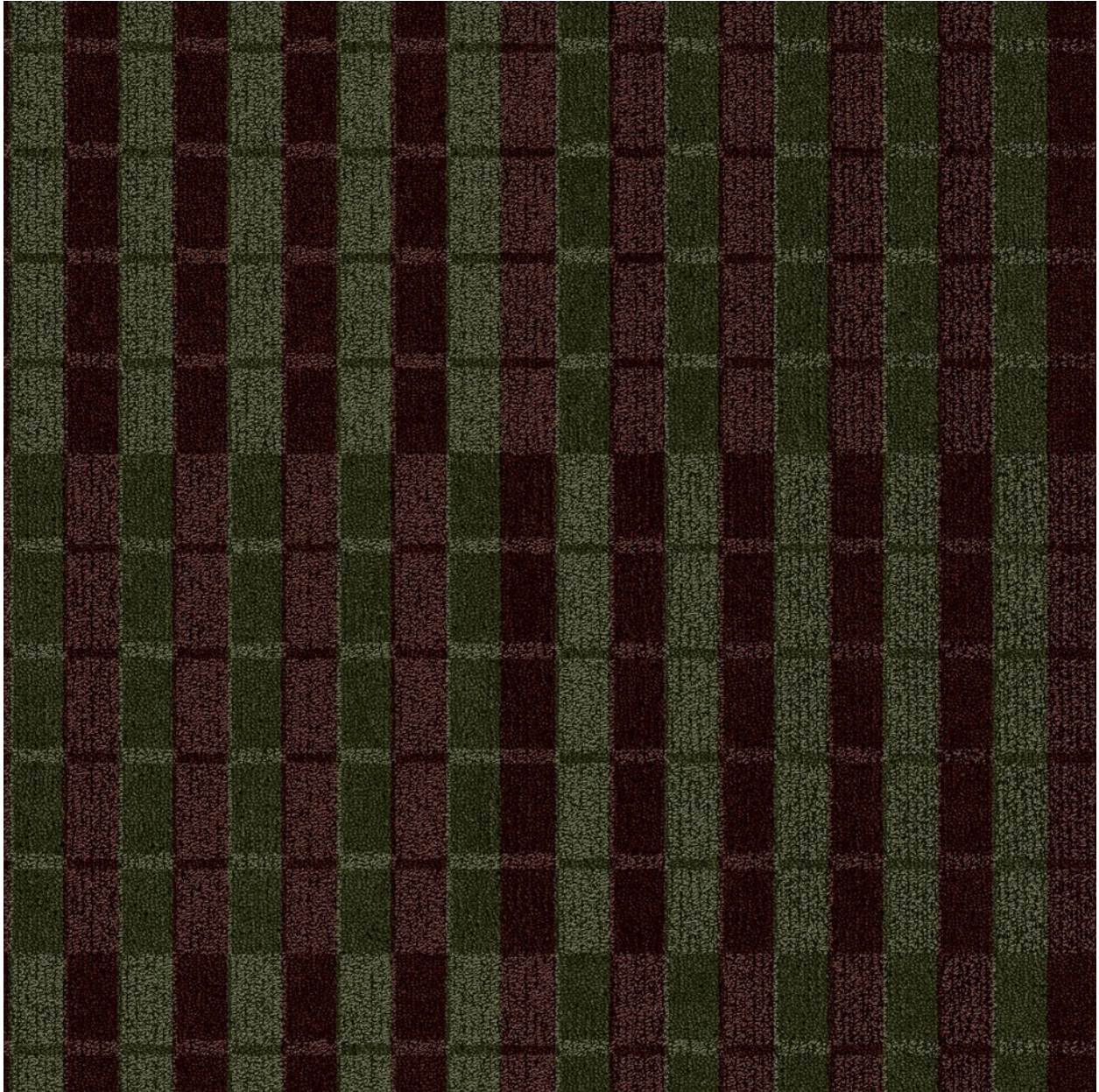


Style: 364 BAR NONE  
Repeat: 24"x24"  
Color: 286

YARN COMPONENTS



A  3005  
B  X203





Style: 364 BAR NONE  
Repeat: 24"x24"  
Color: 288



YARN COMPONENTS

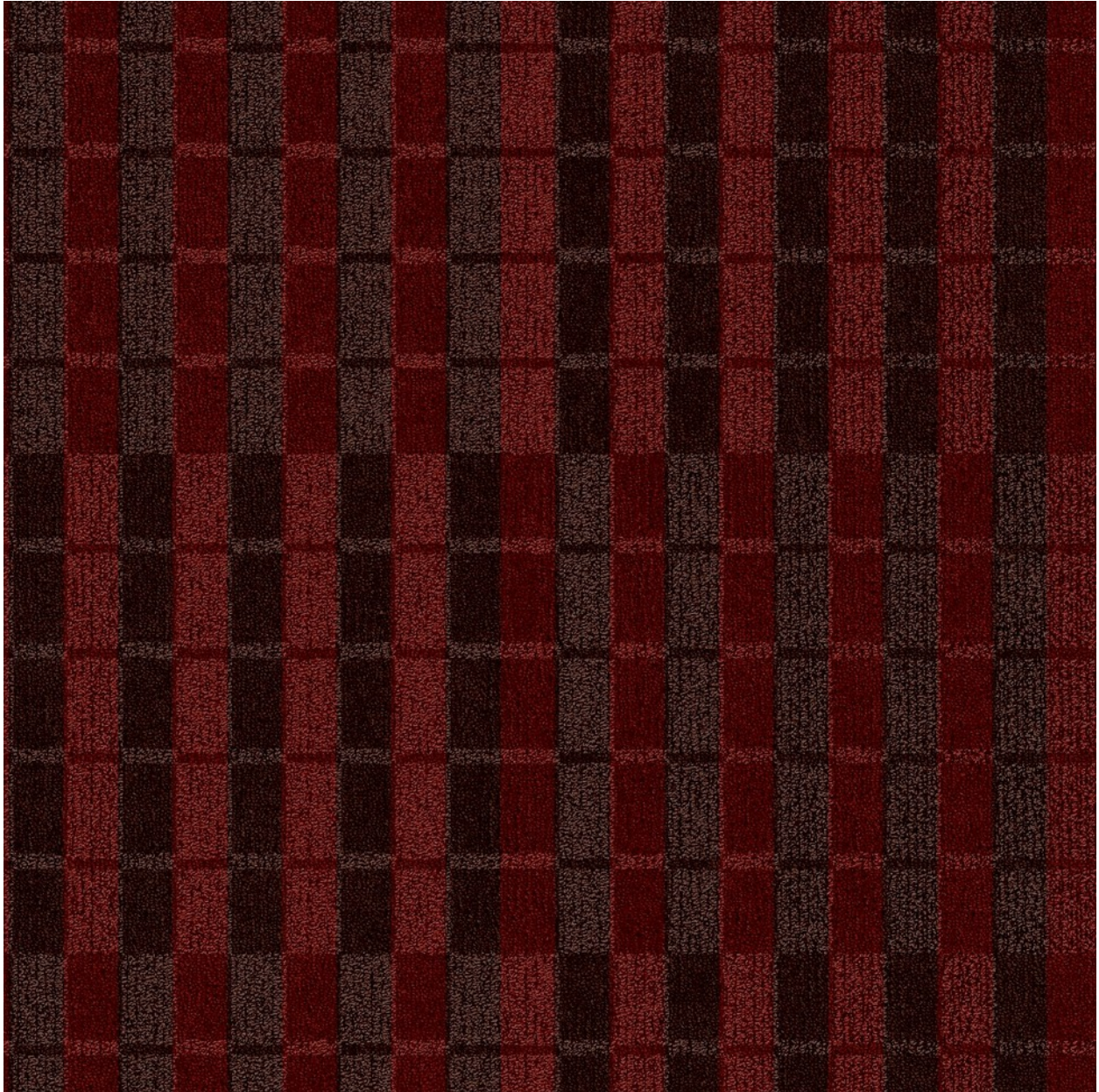
A  7503  
B  4079



Style: 364 BAR NONE  
Repeat: 24"x24"  
Color: 294

YARN COMPONENTS

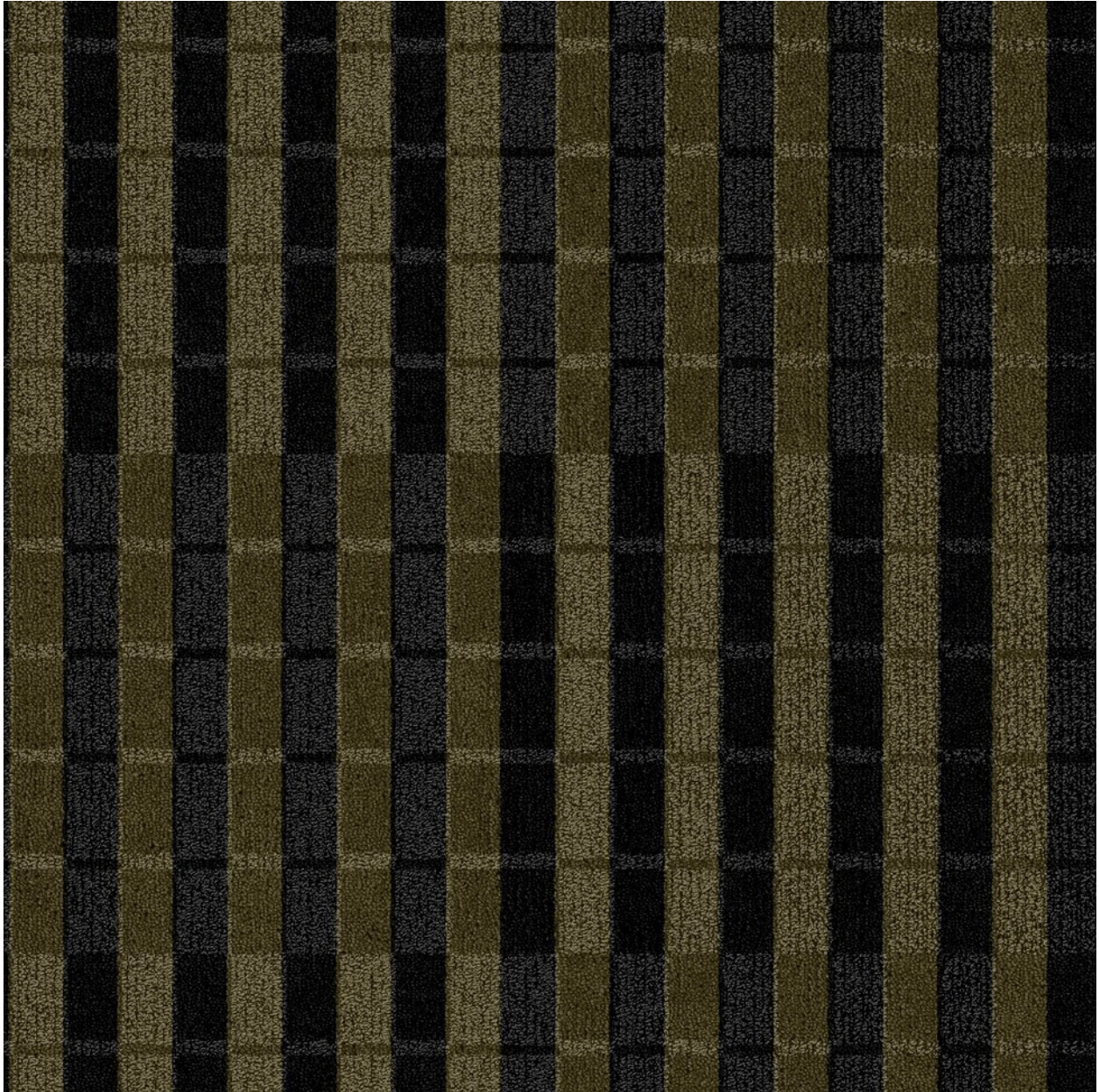
A  7502  
B  3001



Style: 364 BAR NONE  
Repeat: 24"x24"  
Color: 297



YARN COMPONENTS

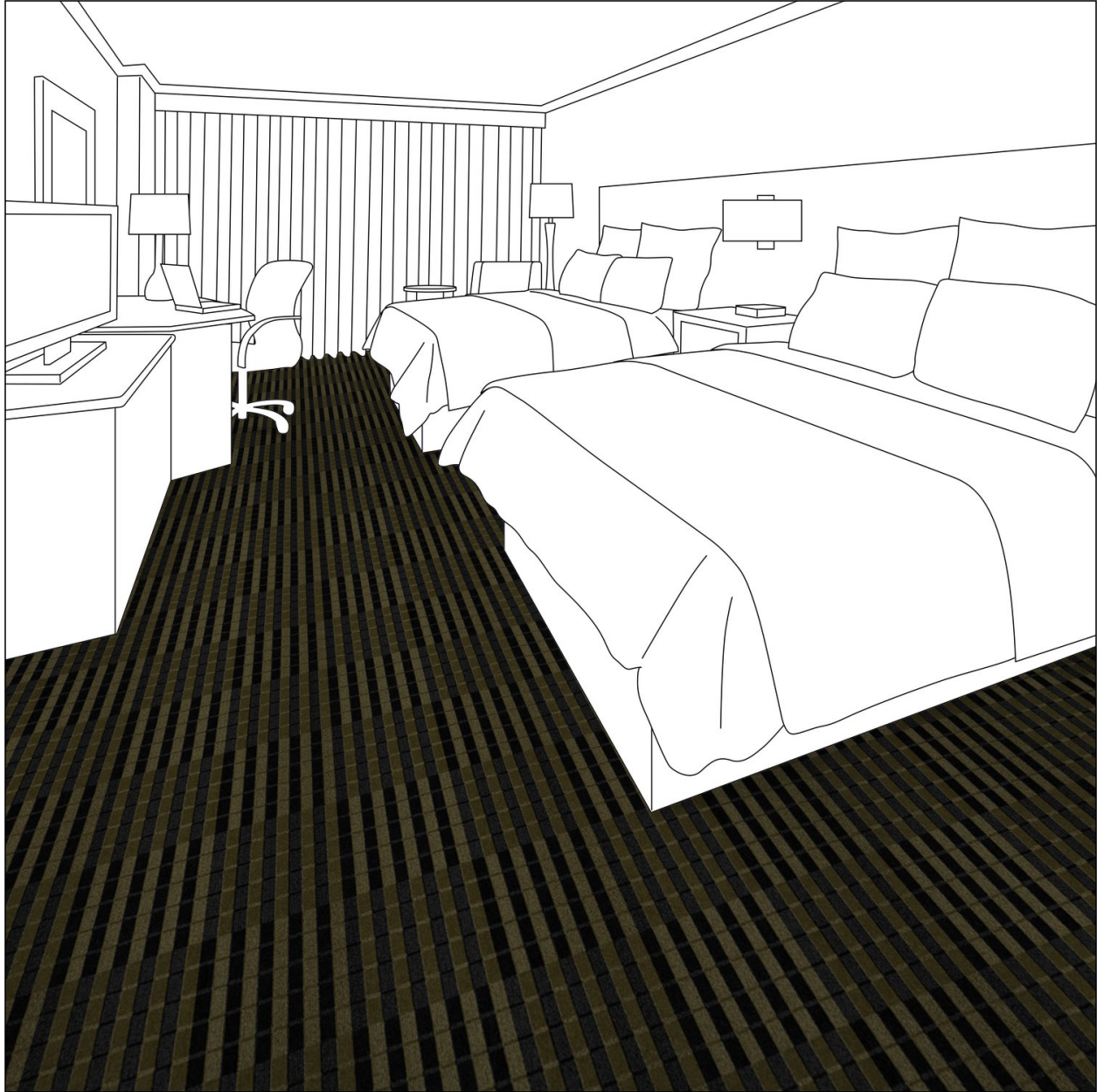
- A  2041
- B  7503



Style: 364 BAR NONE  
Repeat: 24"x24"  
Color: 298

YARN COMPONENTS

A  8002  
B  7506



Style: 364 BAR NONE  
Repeat: 24"x24"  
Color: 298

YARN COMPONENTS

- A  8002
- B  7506

## SPECIFICATIONS

<b>Style Name</b>	364 BAR NONE
<b>Construction</b>	Element - Enhanced-Loop Tip Shear
<b>Fiber Content</b>	100% C.F. Lextron Enviro-Green Solution Dyed Nylon
<b>Machine Gauge</b>	1/10
<b>Pattern Repeat</b>	24"x24"
<b>Tufted Pile Weight</b>	Standard 32 oz. per sq. yd.
<b>Finished Pile Height</b>	Approximately .250 High/ .187 Med./ .062 Low
<b>Stitches Per Inch</b>	10
<b>Primary Backing</b>	Woven Synthetic
<b>Secondary Backing</b>	Actionbac®
<b>Dye</b>	Solution Dyed
<b>Total Weight</b>	Approximately 68 oz. per sq. yd.
<b>Production Width</b>	12 ft.
<b>Density</b>	5517
<b>Yarn Size</b>	1360/2 ply
<b>Radiant Panel</b>	Class 1
<b>Smoke Density</b>	Less than 450
<b>Warranty</b>	10 Year Wear Guarantee
<b>Traffic Class</b>	Recommended for moderate (room) carpet traffic levels.
<b>Recycled Content</b>	Lextron Enviro-Green Solution Dyed Nylon contains 10% pre-consumer recycled content.
<b>Environmental Information</b>	<ul style="list-style-type: none"><li>• CRI Green Label Plus™ Certified.</li><li>• Product qualifies for 1 LEED Point.</li><li>• Enviro-Green yarn has 10% pre-consumer recycled content.</li></ul>

### Additional Information

- Carpet should be installed in accordance with the Carpet and Rug Institute's standard CRI-104. Carpet must be over manufacturer's recommended pad.
- Pattern streaks and banding are visually apparent streaking in patterned carpet resulting from linear juxtaposition of pattern elements visible in both length and width direction. IT IS NOT A CARPET DEFECT, but is inherent in solution dyed graphic and cut/loop patterns.
- All Specifications subject to normal manufacturing tolerance.