
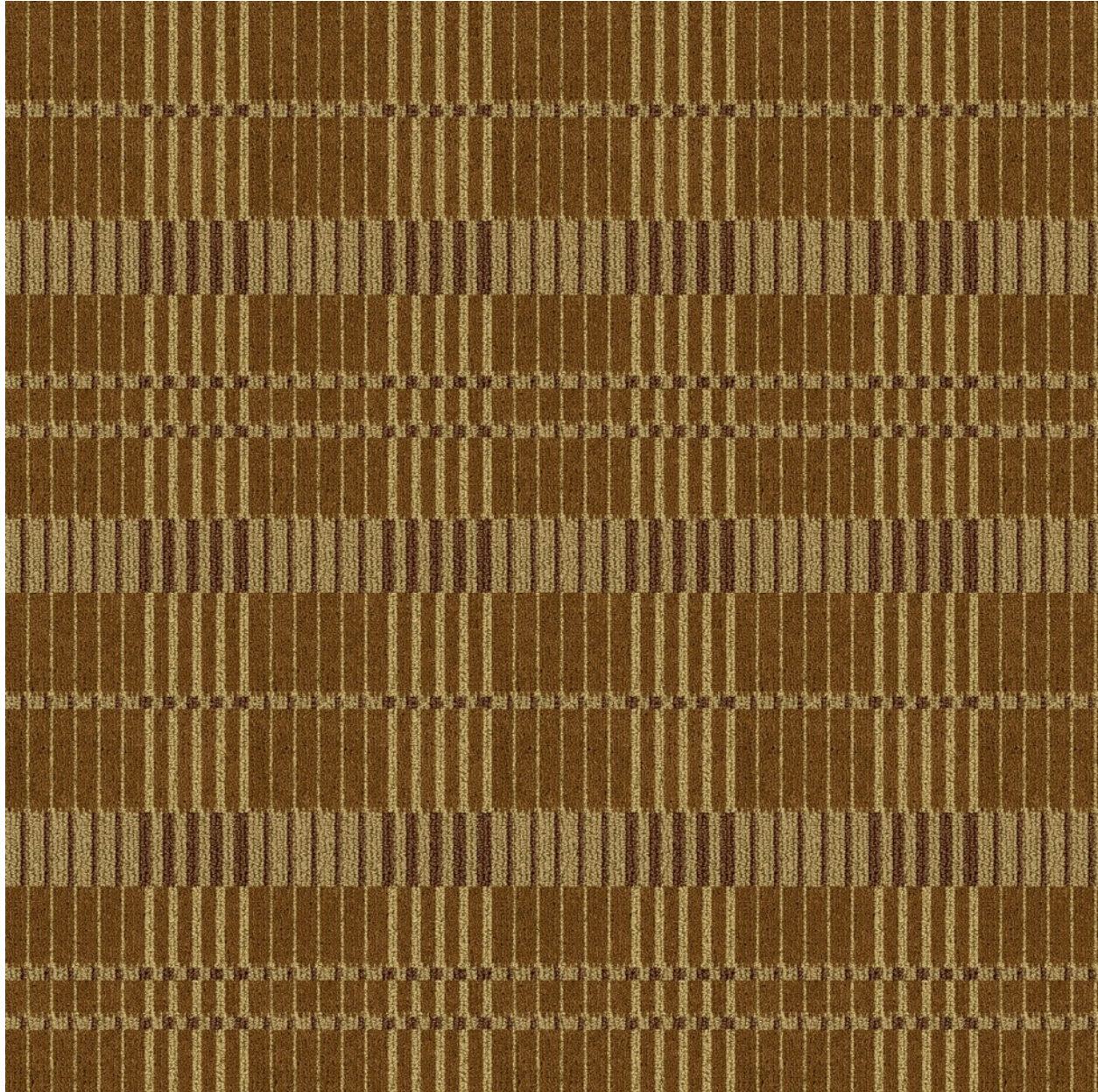


Style: 382 BELOVED
Repeat: 8"x20"
Color: 3221

YARN COMPONENTS

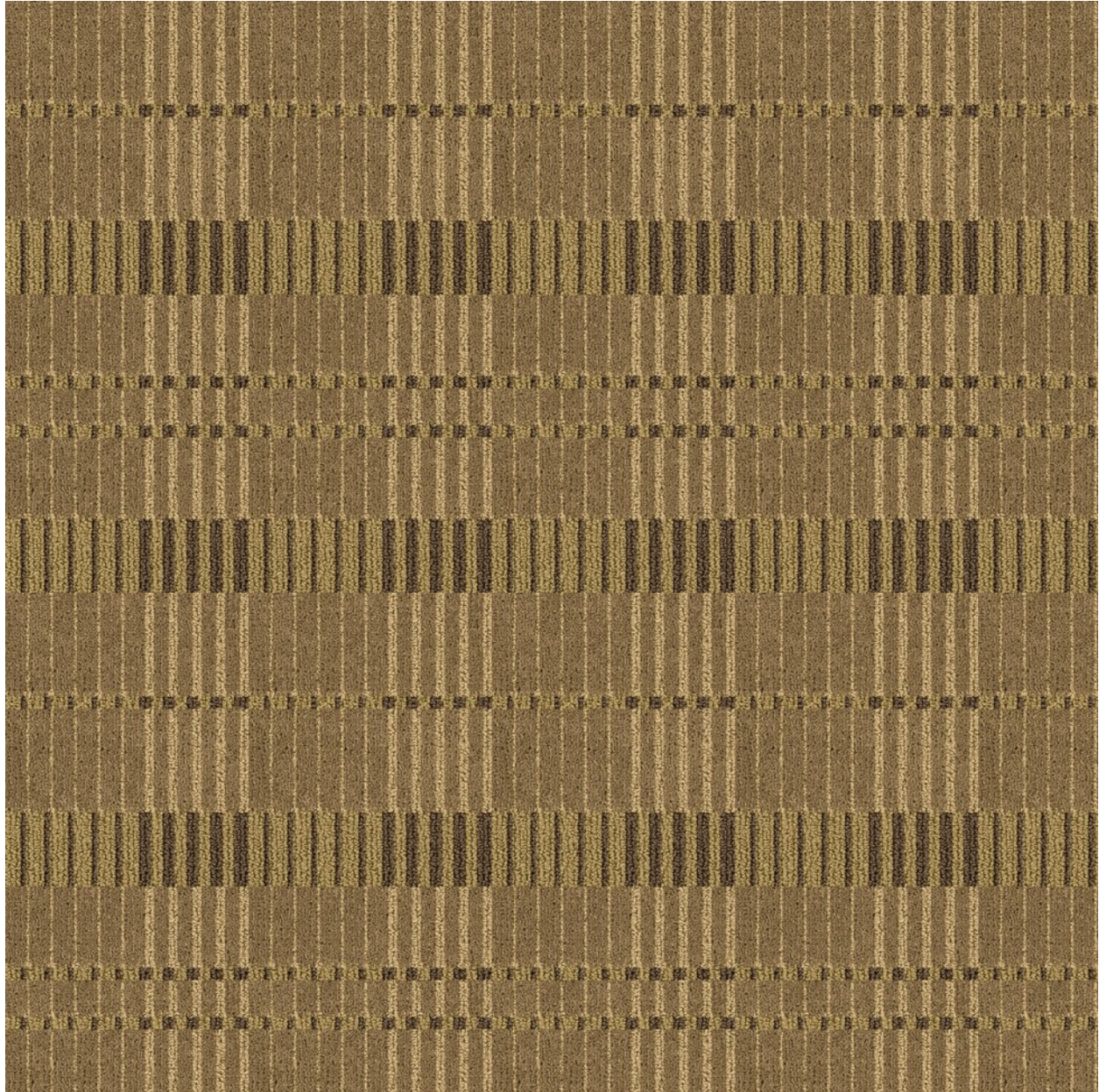
- | | | | | | |
|---|---|------|---|---|------|
| A |  | 3531 | D |  | 3009 |
| B |  | 7009 | | | |
| C |  | 8002 | | | |



Style: 382 BELOVED
Repeat: 8"x20"
Color: 3222

YARN COMPONENTS

- | | | | | | |
|---|---|------|---|---|------|
| A |  | 3001 | D |  | 3522 |
| B |  | 3009 | | | |
| C |  | 7009 | | | |



Style: 382 BELOVED
Repeat: 8"x20"
Color: 3223

YARN COMPONENTS

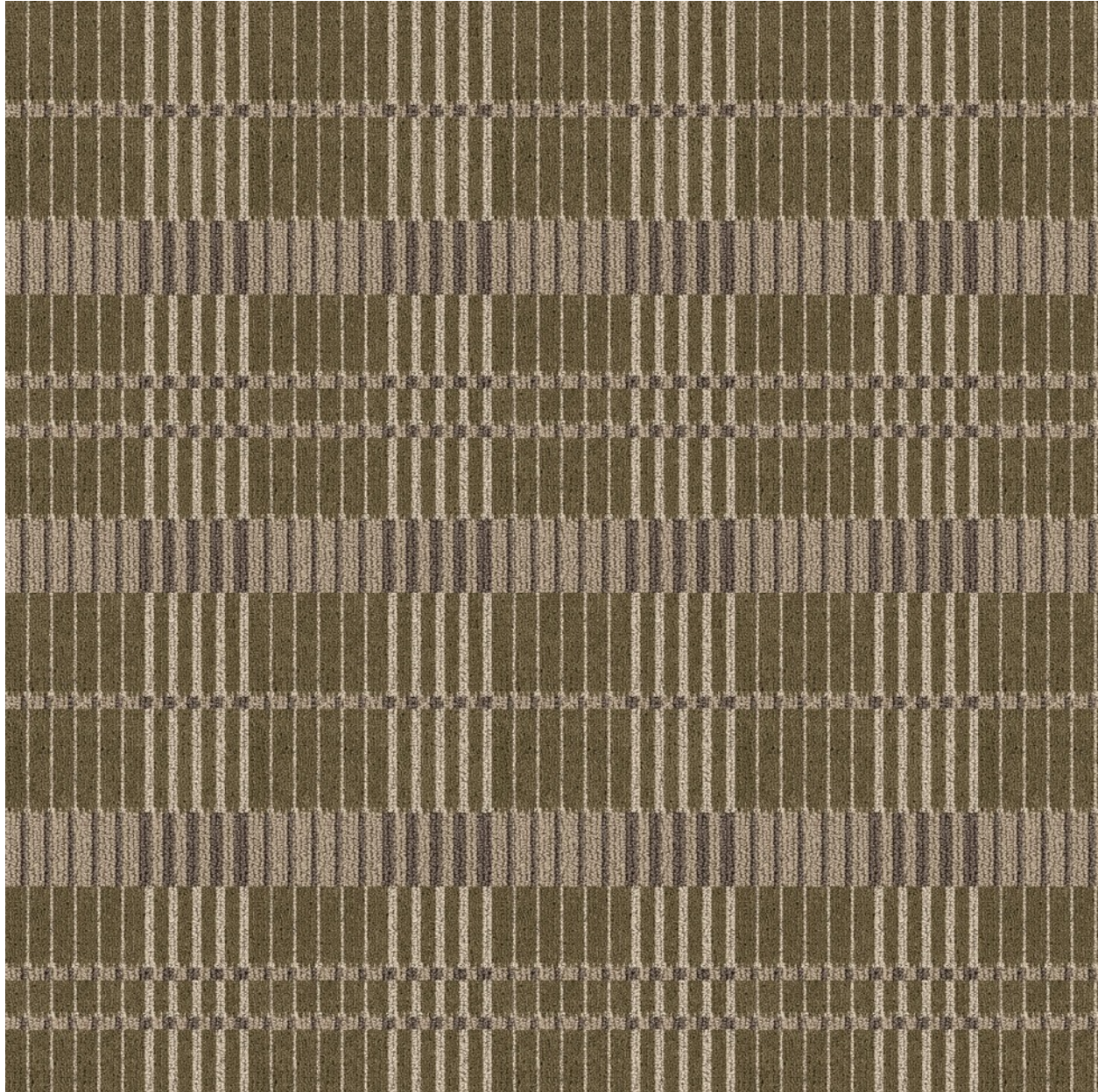
- | | | | | | |
|---|---|------|---|---|------|
| A |  | 3001 | D |  | 3525 |
| B |  | 3528 | | | |
| C |  | 7502 | | | |



Style: 382 BELOVED
Repeat: 8"x20"
Color: 3224

YARN COMPONENTS

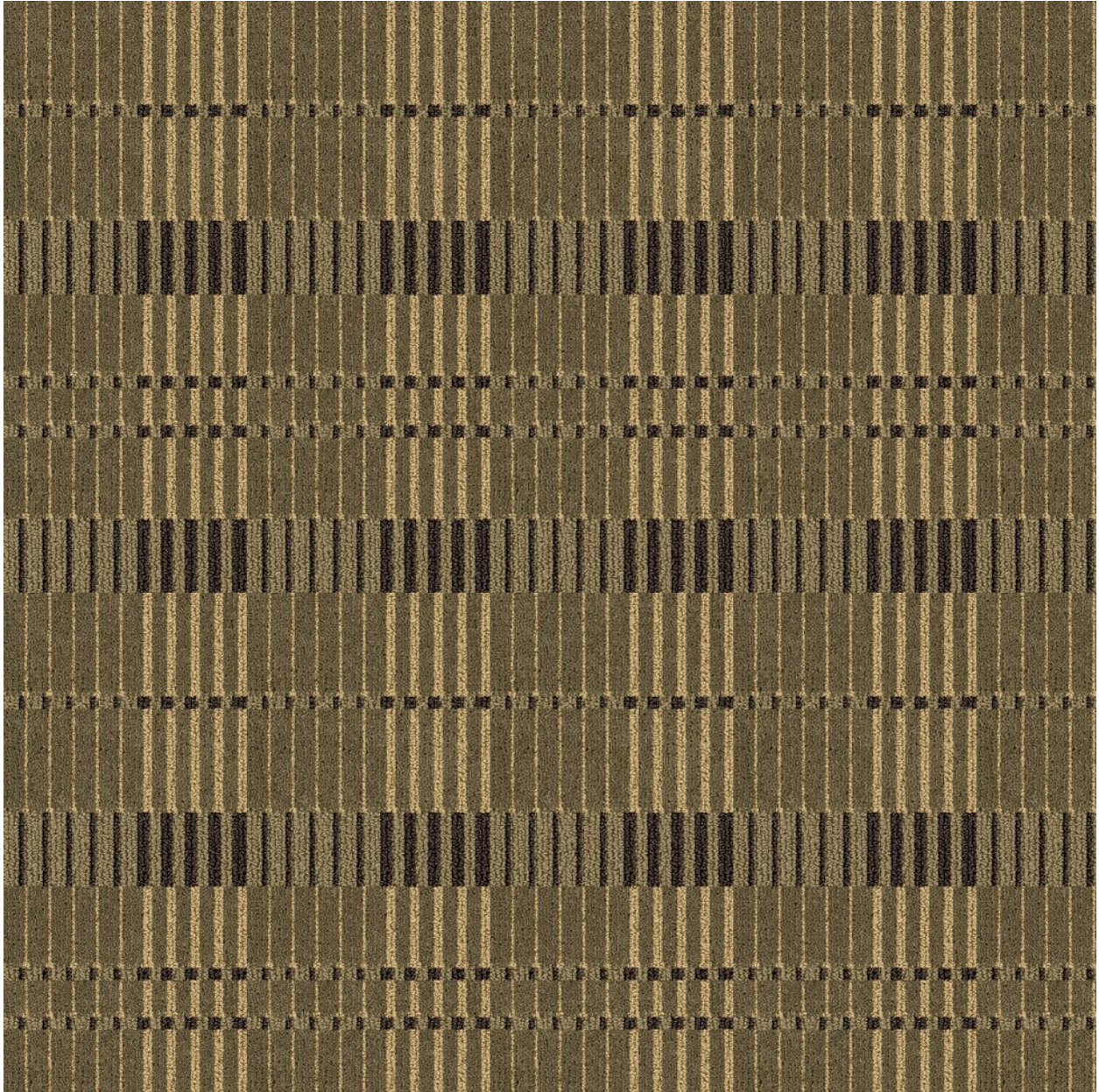
- | | | | | | |
|---|---|------|---|---|------|
| A |  | 7518 | D |  | 3009 |
| B |  | 7502 | | | |
| C |  | 7503 | | | |



Style: 382 BELOVED
Repeat: 8"x20"
Color: 3225

YARN COMPONENTS

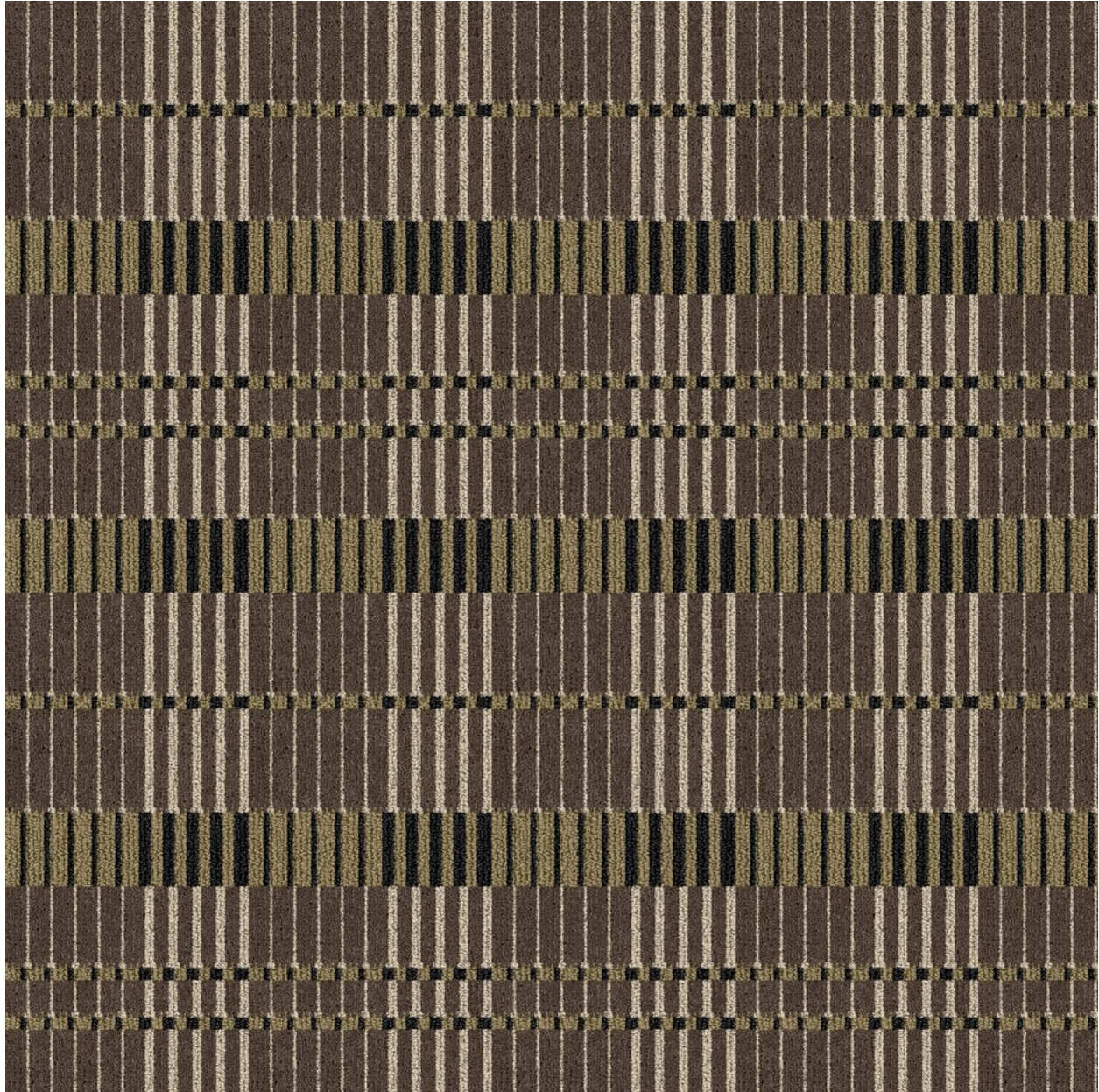
- | | | | | | |
|---|---|------|---|---|------|
| A |  | 3524 | D |  | 3526 |
| B |  | 8523 | | | |
| C |  | 8522 | | | |



Style: 382 BELOVED
Repeat: 8"x20"
Color: 3226


YARN COMPONENTS

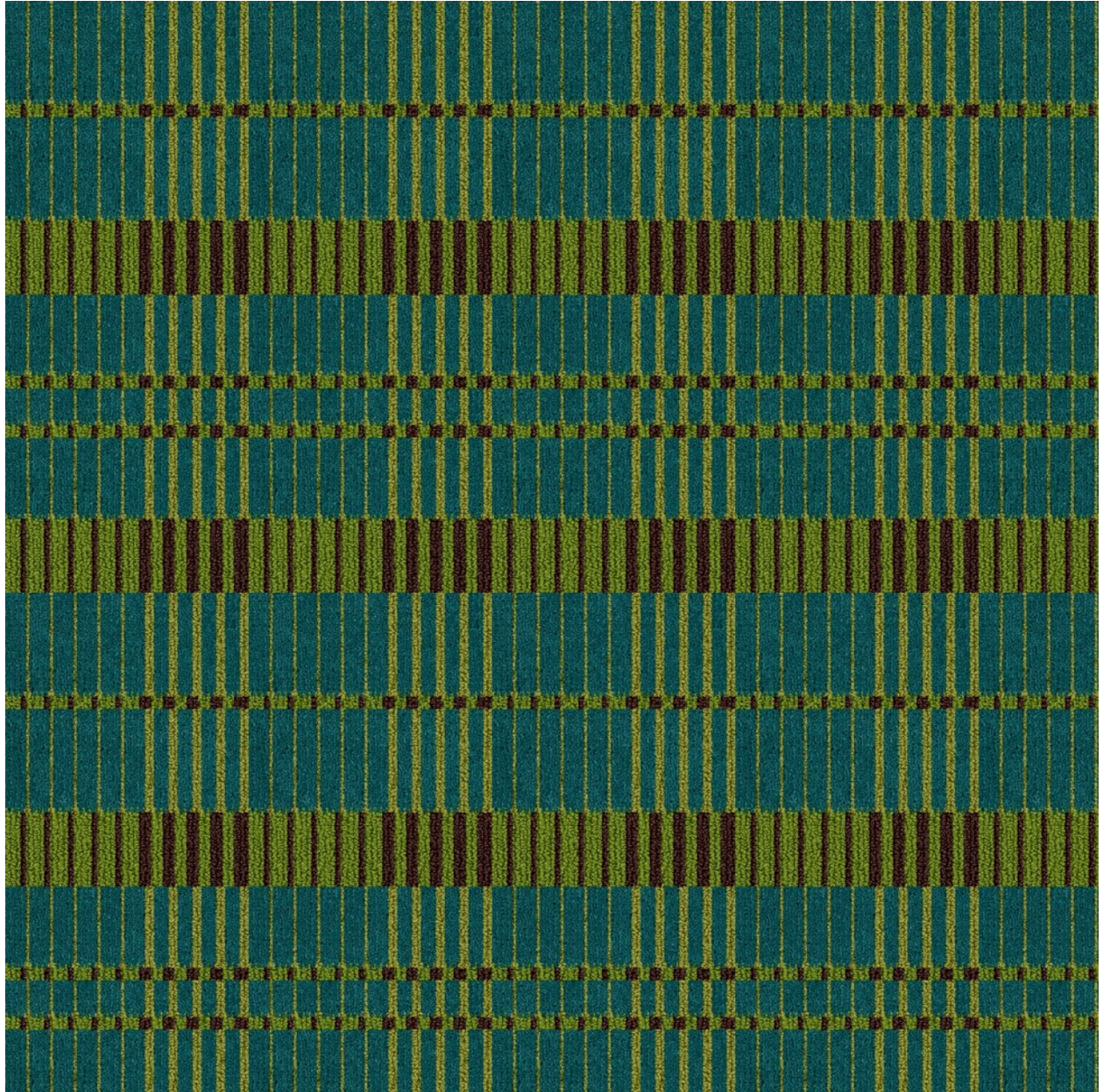
- | | | | | | |
|---|---|------|---|---|------|
| A |  | 3529 | D |  | 3525 |
| B |  | 8523 | | | |
| C |  | 7510 | | | |



Style: 382 BELOVED
Repeat: 8"x20"
Color: 3227

YARN COMPONENTS

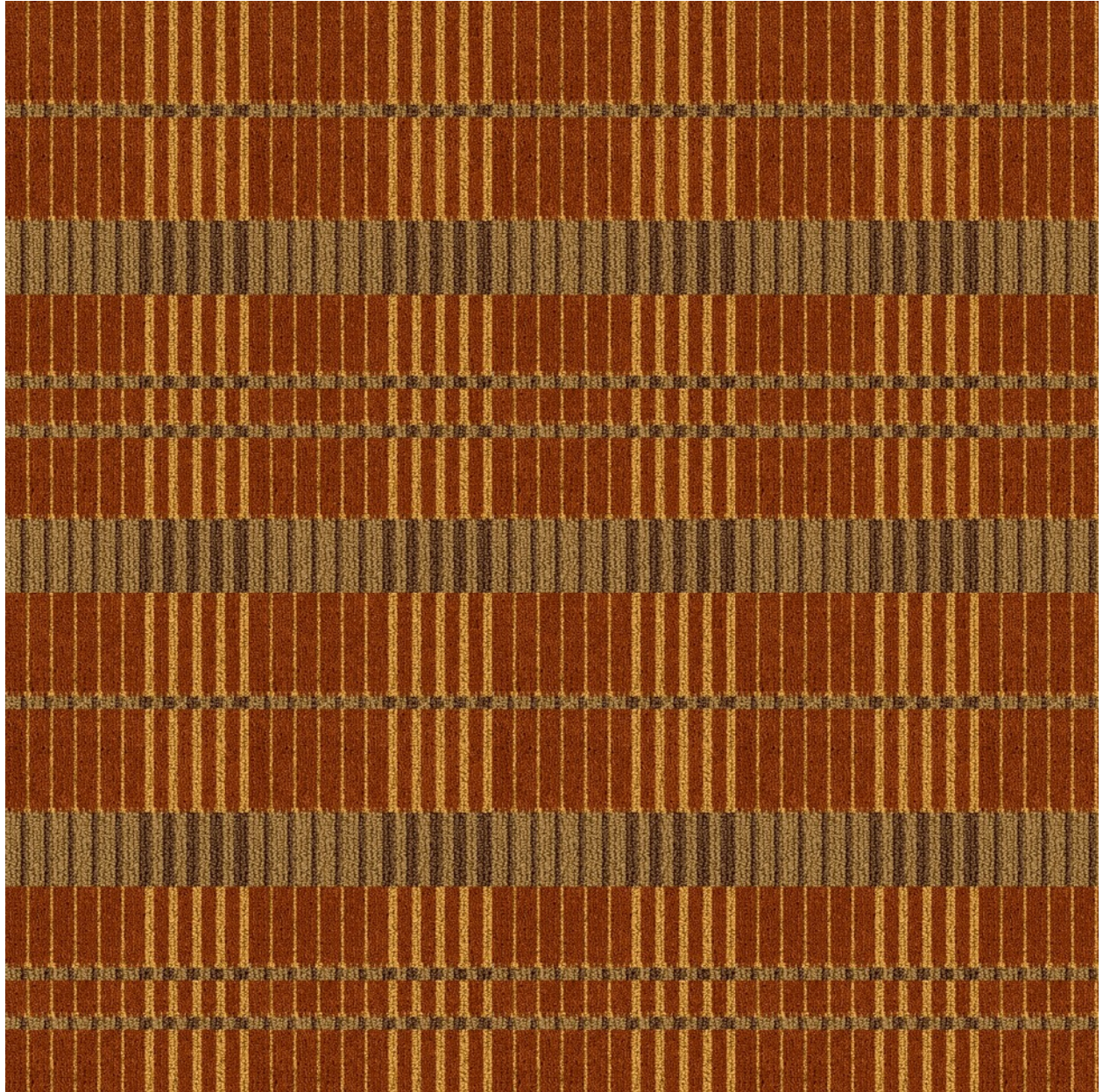
- | | | | | | |
|---|---|------|---|---|------|
| A |  | 3529 | D |  | 3526 |
| B |  | 8522 | | | |
| C |  | 8002 | | | |



Style: 382 BELOVED
Repeat: 8"x20"
Color: 3228


YARN COMPONENTS

- | | | | | | |
|---|---|------|---|---|------|
| A |  | 4516 | D |  | 4507 |
| B |  | 5508 | | | |
| C |  | 7503 | | | |



Style: 382 BELOVED
Repeat: 8"x20"
Color: 3229


YARN COMPONENTS

- | | | | | | |
|---|---|------|---|---|------|
| A |  | 3005 | D |  | 3530 |
| B |  | 3513 | | | |
| C |  | 7009 | | | |



Style: 382 BELOVED
Repeat: 8"x20"
Color: 3227

YARN COMPONENTS

- | | | | | | |
|---|---|------|---|---|------|
| A |  | 3529 | D |  | 3526 |
| B |  | 8522 | | | |
| C |  | 8002 | | | |

SPECIFICATIONS

Style Name	382 BELOVED
Construction	Element - Enhanced-Loop Tip Shear
Fiber Content	100% C.F. Lextron Enviro-Green Solution Dyed Nylon
Machine Gauge	1/10
Pattern Repeat	8"x20"
Tufted Pile Weight	Standard 32 oz. per sq. yd.
Finished Pile Height	Approximately .250 High/ .187 Med./ .062 Low
Primary Backing	Woven Synthetic
Secondary Backing	Actionbac®
Dye	Solution Dyed
Total Weight	Approximately 68 oz. per sq. yd.
Production Width	12 ft.
Style Code	1132
Yarn Size	1360/2 ply
Radiant Panel	Class 1
Smoke Density	Less than 450
Warranty	10 Year Wear Guarantee
Traffic Class	Recommended for moderate (room) carpet traffic levels.
Recycled Content	Lextron Enviro-Green Solution Dyed Nylon contains 10% pre-consumer recycled content.
Environmental Information	<ul style="list-style-type: none">• CRI Green Label Plus™ Certified.• Product qualifies for 1 LEED Point.• Enviro-Green yarn has 10% pre-consumer recycled content.

Additional Information

- Carpet should be installed in accordance with the Carpet and Rug Institute's standard CRI-104. Carpet must be over manufacturer's recommended pad.
- Pattern streaks and banding are visually apparent streaking in patterned carpet resulting from linear juxtaposition of pattern elements visible in both length and width direction. IT IS NOT A CARPET DEFECT, but is inherent in solution dyed graphic and cut/loop patterns.
- All Specifications subject to normal manufacturing tolerance.